

Axima W180-P4F-LL

Specifications

Marka	Axima
Typ	W180-P4F-LL
Typ produktu	Water Cooled Chiller
Ogólna wydajność w kW	1650
Ogólna wydajność w	469,1
Tonaż	
Czynnik chłodzący	Freon
Typ czynnika chłodzącego	R134A
Rozmiary	5200x2100x2050 mm (LxWxH)
Uwagi	y.o.b. 2007
Stock	2

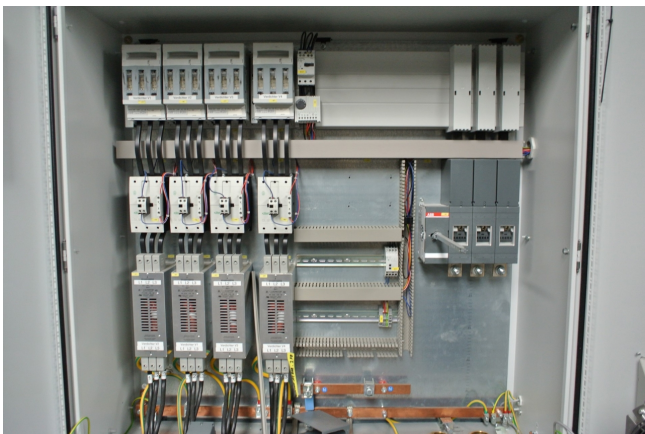


Description

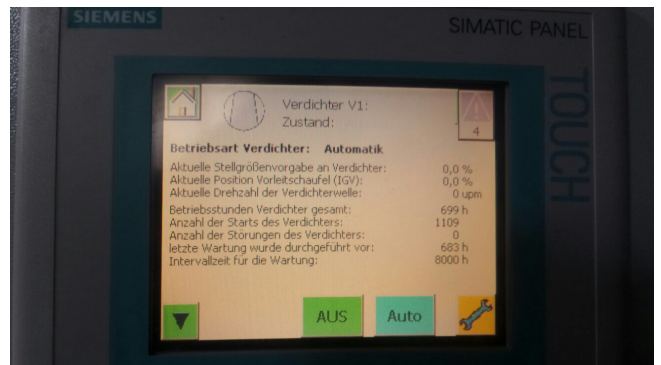
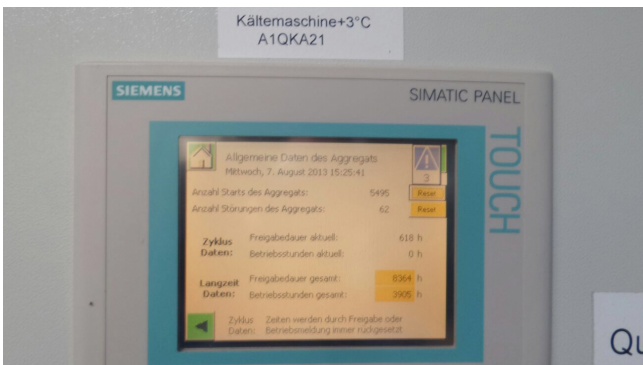
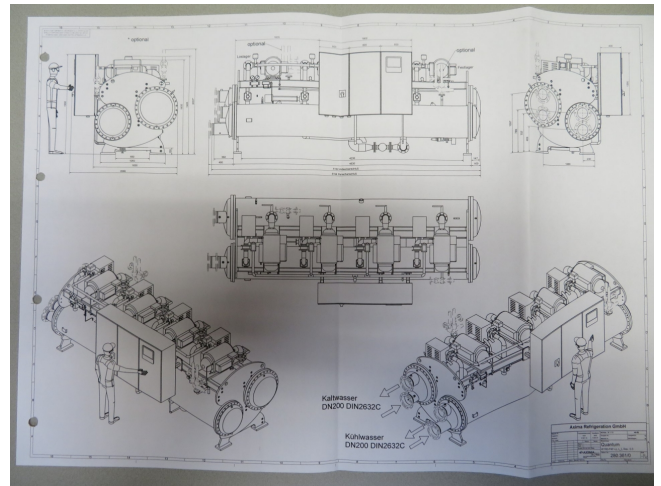
Used Axima W180-P4F-LL

Used Water-cooled Water-chillers Axima W180-P4F-LL, build in 2007. This Water-chiller has the following components: 4 Turbo compressor Axima TT400 H8-1-ST-P-O-CE, 1 Evaporator Axima VRMH 71.182.450.2, 1 Condensor Axima CRMH 61.240.450.2 and Siemens Simatic Control. Running hours between 600 and 4000 hours (we have 2 chillers) see pictures.











Unit Nr.	Hour counter total	Hour Counter compressor 4	Hour Counter Compressor 3	Hour Counter Compressor 2	Hour Counter Compressor 1
A1QKA21	3905 H		1511 H	1725 H	2051 H
A1QKA11	1976 H	660 H	567 H	611 H	675 H
A1QKA12	1852 H	566 H	746 H	727 H	609 H
A1QKA13	1940 H	727 H	657 H	686 H	699 H
A1QKA14	X	X	X	X	X